

# Food Security in DuPage County

## Shifting the Dialogue

Christina LePage  
People's Resource Center  
April 23, 2018

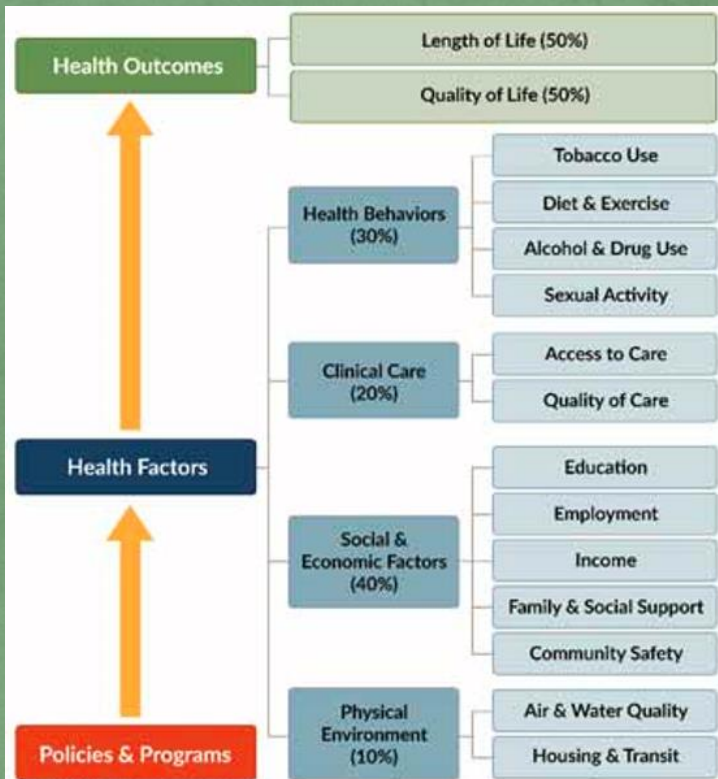


DEFINING PARAMETERS  
WORKGROUP GOAL

RECOMMEND PARAMETERS OF A GOOD  
FOOD SYSTEM

# County Health Rankings & Roadmaps

Building a Culture of Health, County by County



County Health Rankings model © 2018 UW98



## News Release

111 N. County Farm Rd., Wheaton, IL 60187

### Media Inquiries:

Don Bolger  
Public Information Officer  
(630) 221-7374

### DuPage County Board of Health

Linda A. Kurzawa  
President  
Lanny Wilson, M.D.  
Vice President

March 14, 2018

**FOR IMMEDIATE RELEASE**

### DuPage County Ranked Healthiest in Illinois

**DUPAGE COUNTY**—The DuPage County Health Department is pleased to announce that DuPage County has once again been recognized as the healthiest county in Illinois. The county rankings, developed by the Robert Wood Johnson Foundation, are based on quality of life factors such as longevity and overall health status, including physical and mental health.

# DUPAGE ASSETS

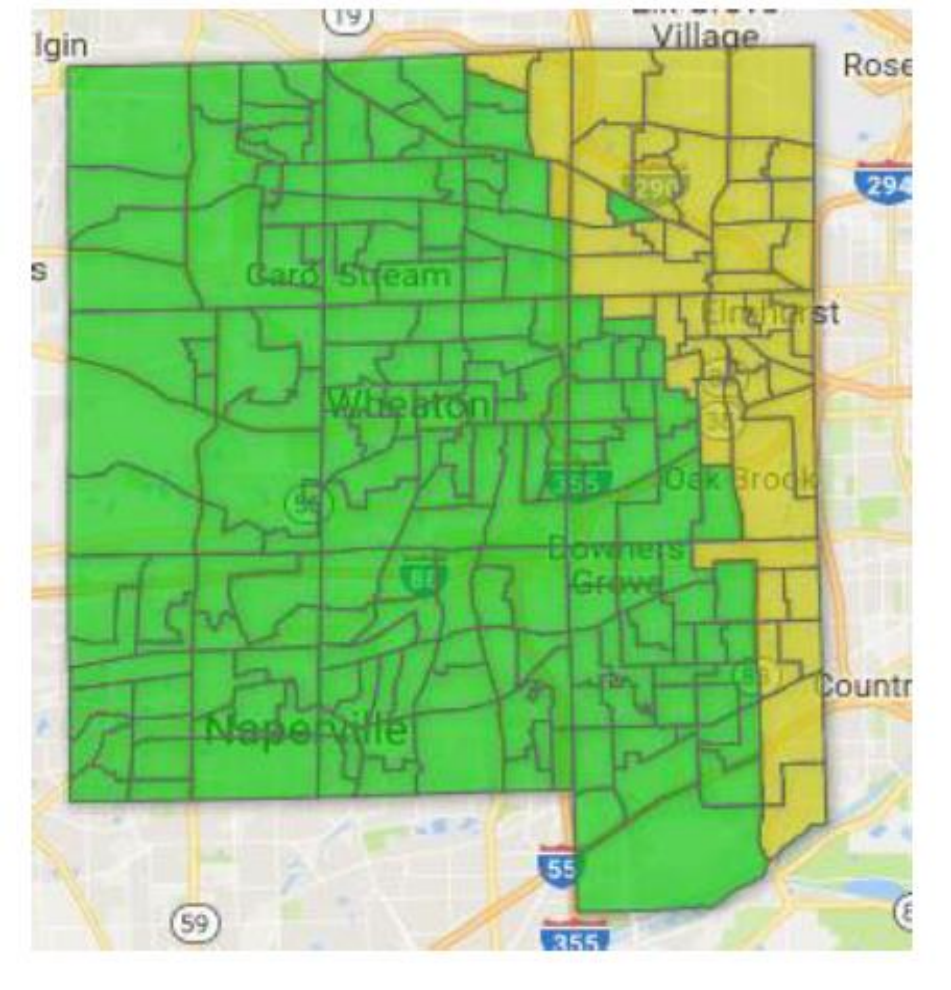
DUPAGE HEALTH COALITION

IMPACT DUPAGE

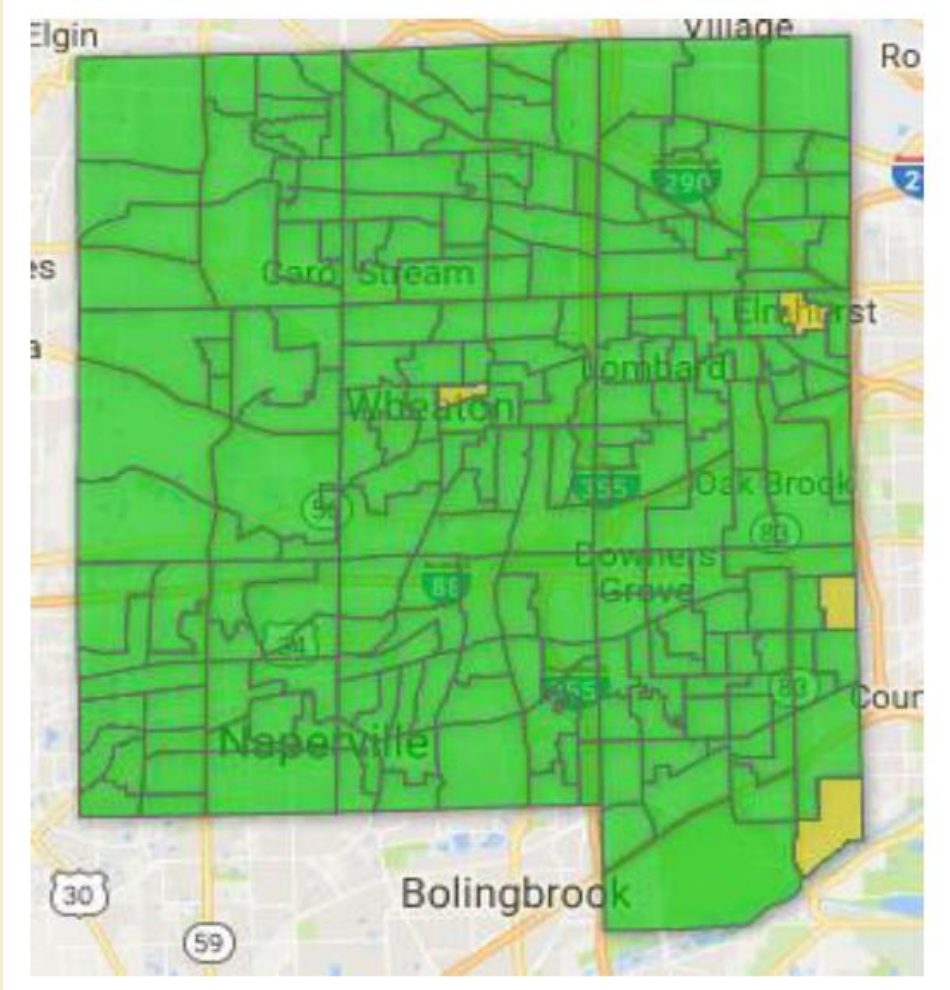
FORWARD

DUPAGE COMMUNITY HUNGER NETWORK

# PROXIMITY TO RESOURCES AND NEED DUPAGE COUNTY FY16 vs FY17



FY 16



FY 17

Source: Northern Illinois Food Bank, 2017

WHAT IS THE ISSUE?

# CHALLENGES

Childhood Obesity & Chronic  
Disease Prevalence

Threats to the Safety Net

Balancing Client-Choice &  
Nutrition Education

# DUPAGE DATA

DUPAGE COUNTY HEALTH DEPARTMENT forward

## CALL TO ACTION ON OBESITY:

MAKING HEALTHY LIFESTYLES A PRIORITY IN DUPAGE COUNTY  
DECEMBER 2016

IN OBESE DUPAGE STUDENTS:  
MORE THAN 40% HAD ELEVATED BLOOD PRESSURE



IN DUPAGE:



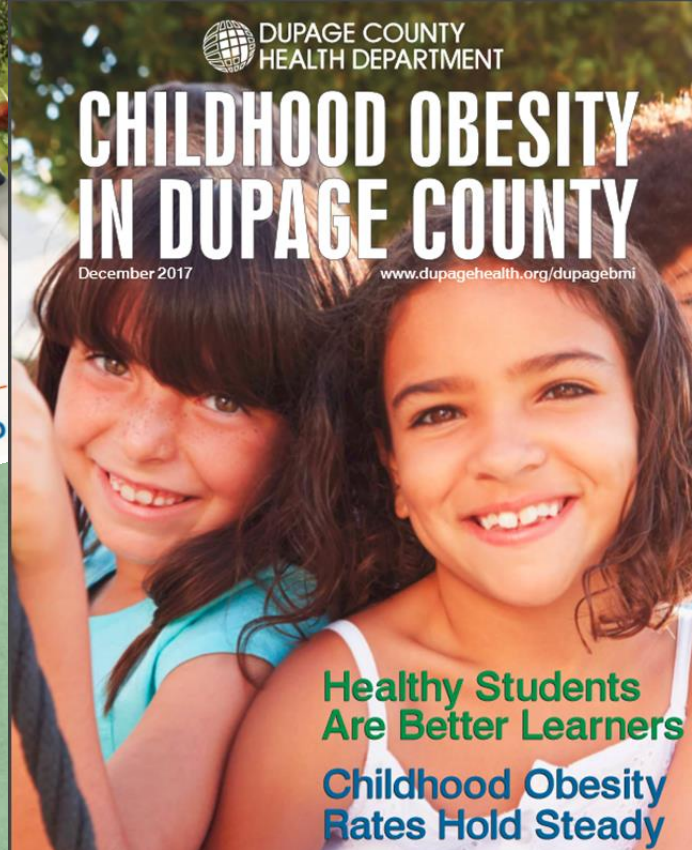
Year	Obesity Rate
2011-12	15.7%
2015-16	14.4%

OBESITY IN DUPAGE PUBLIC SCHOOL STUDENTS HAS DROPPED

DUPAGE COUNTY HEALTH DEPARTMENT

## CHILDHOOD OBESITY IN DUPAGE COUNTY

December 2017 [www.dupagehealth.org/dupagebmi](http://www.dupagehealth.org/dupagebmi)



Healthy Students Are Better Learners  
Childhood Obesity Rates Hold Steady

Share this report in your community!

FEEDING AMERICA

## Hunger in America 2014

Special Report



Dupage County, Illinois  
Illinois Food Bank

NORTHERN ILLINOIS FOOD BANK

HUNGER IN AMERICA 2014

THE DUPAGE COMMUNITY FOUNDATION

WHEATON BANK & TRUST COMPANY

# Childhood Obesity

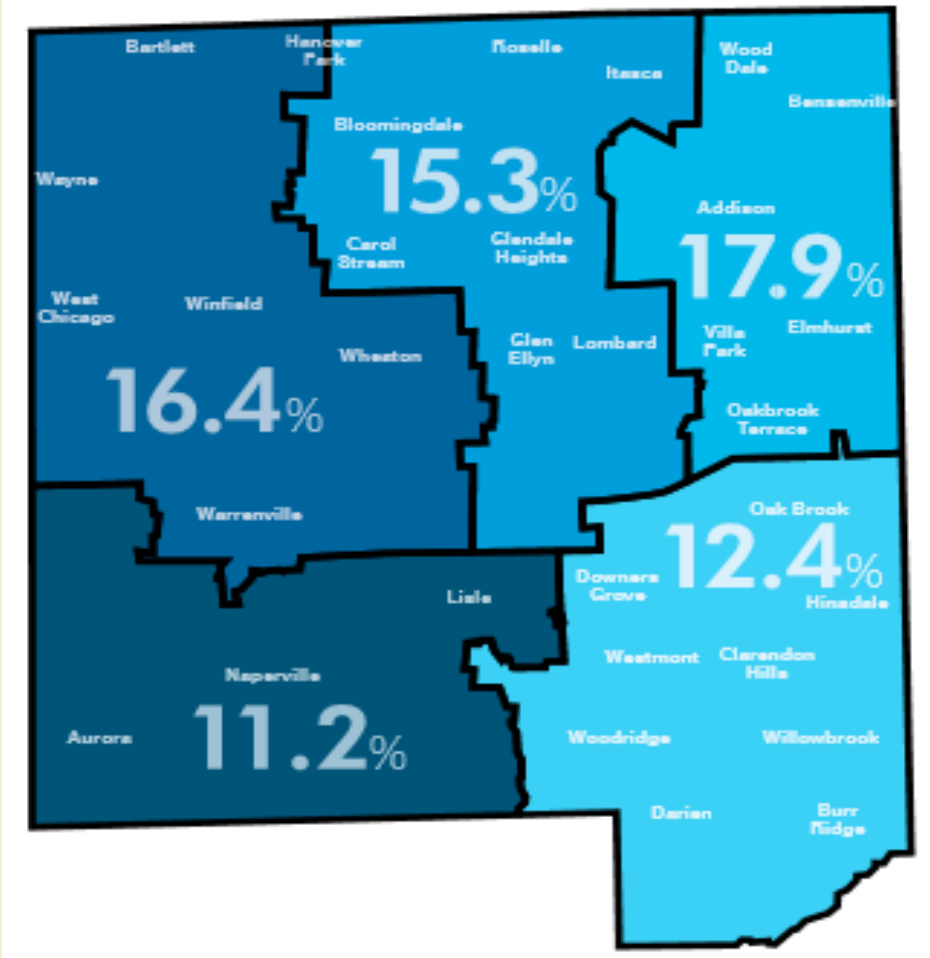
## DuPage County (2016 – 2017)

14.8 percent of kindergarten, sixth grade, and ninth grade public school students in DuPage County had obesity

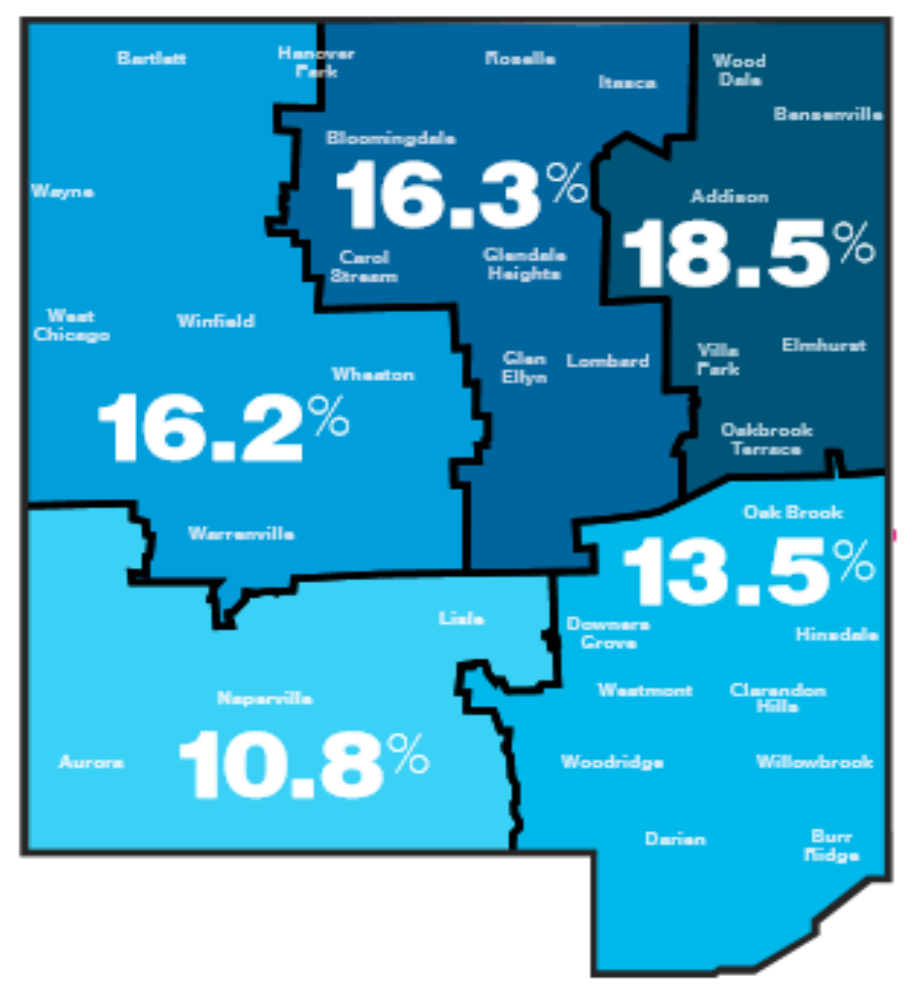
44 percent of students with obesity had an elevated blood pressure (BP) reading

The obesity rate among children aged 2 to 4 years enrolled in DuPage County's Women, Infants, and Children (WIC) Program (15.1 percent in 2016) continues to exceed the national WIC rate (14.5 percent in 2014), stressing the need for early intervention

# CHILDHOOD OBESITY RATES BY REGION DUPAGE COUNTY 2015/2016 vs 2016/2017



15'/16'



16'/17'

Source: DuPage County Health Department, 2016 & 2017

# DUPAGE DATA

7.3% of residents experience food insecurity at some point during the year

13% of children under 18 years of age live in households that experienced food insecurity

45% of children who are food insecure come from households with incomes above 185% of the federal poverty level who are likely not income-eligible for federal assistance

*SOURCE: DUPAGE HUNGER STUDY 2014*

# THREATS TO OUR SAFETY NET



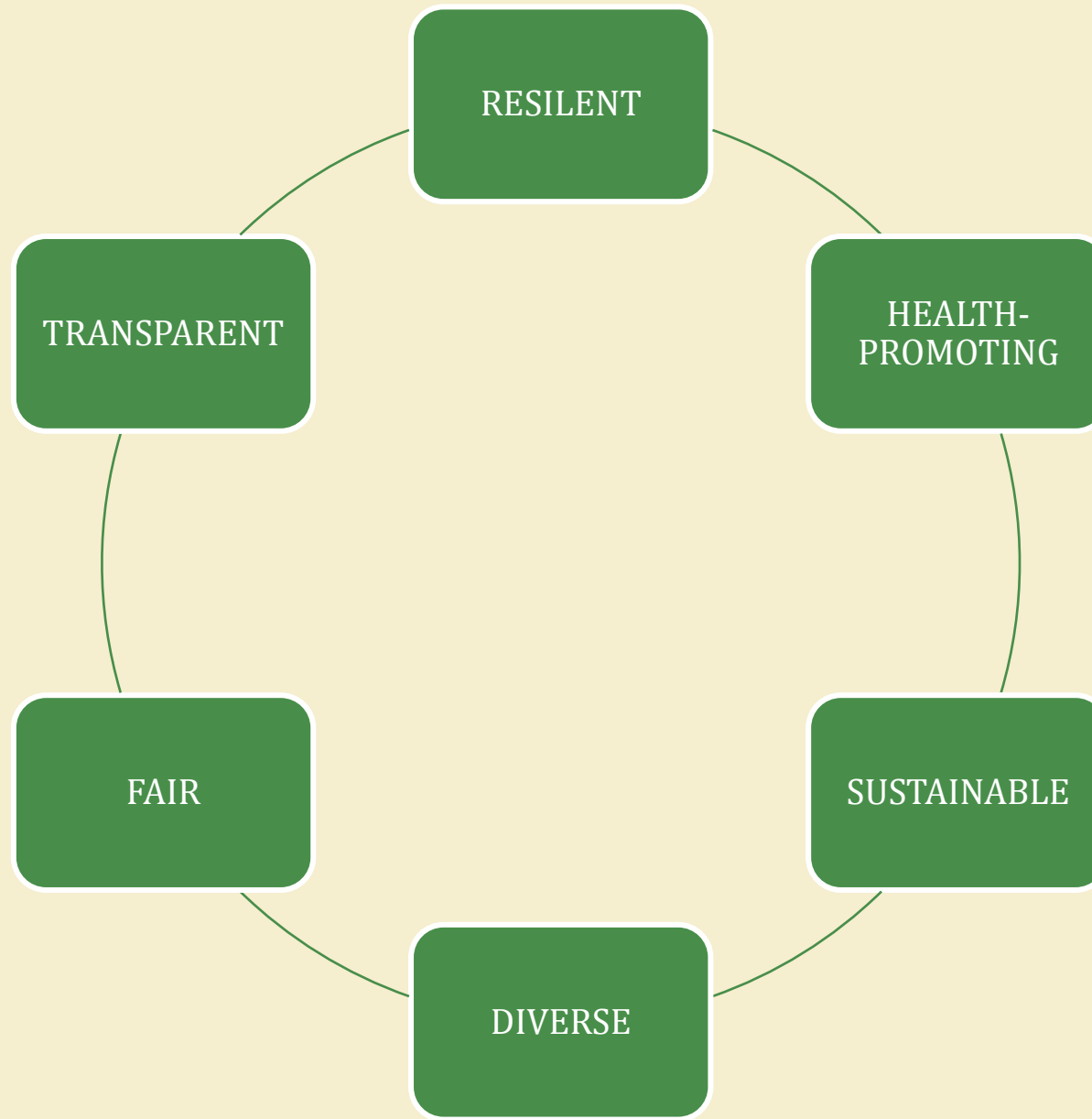
**Protect SNAP from harmful cuts in the 2018 Farm Bill!**

# CLIENT CHOICE



# SHIFTING THE DIALOUGE

# WHAT IS A GOOD FOOD SYSTEM?



Metropolitan Chicago's GO TO 2040 recommends the region support sustainable local food through:

- Greater sustainable local food production and processing.
- Increased equitable access to fresh, nutritious, and affordable foods.
- Greater awareness through data, research, training, and information to support local food systems.

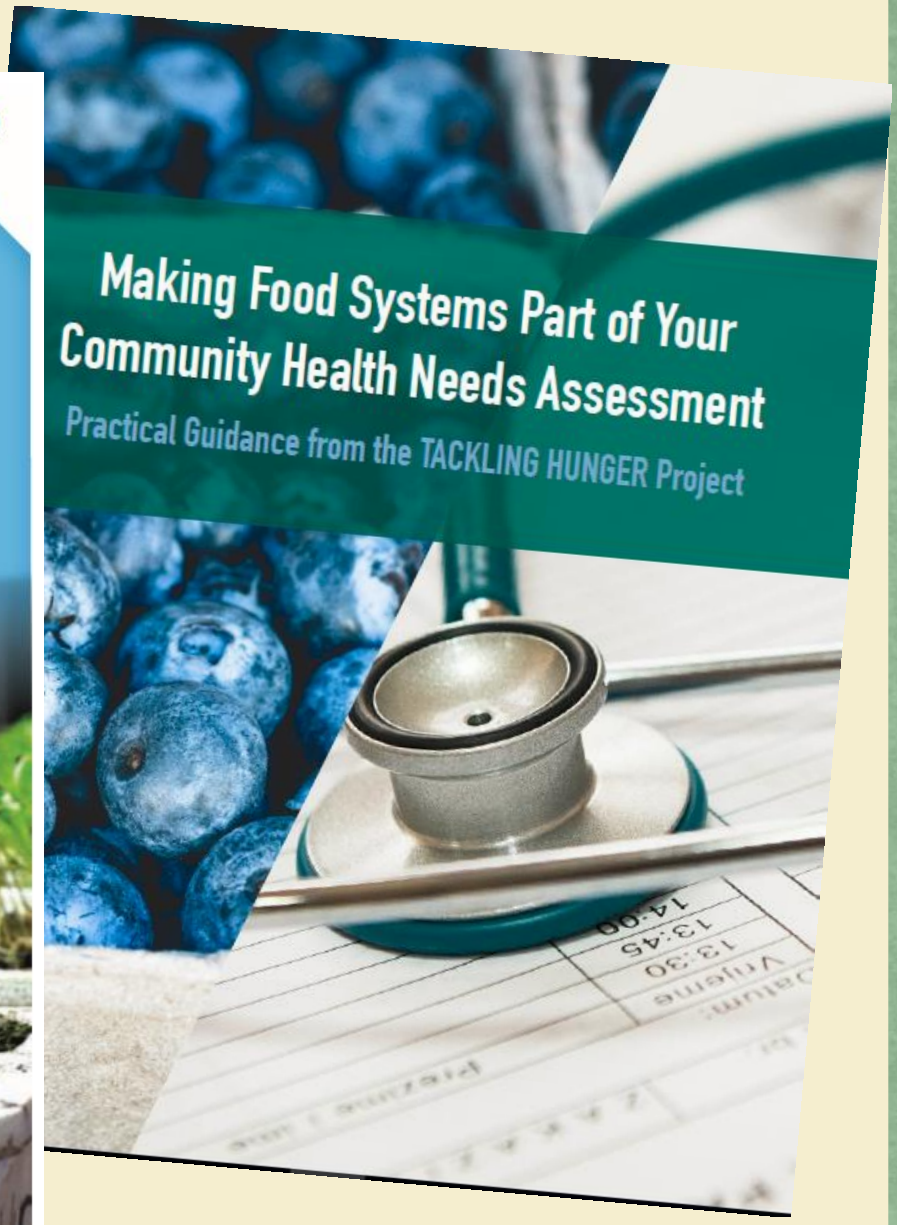
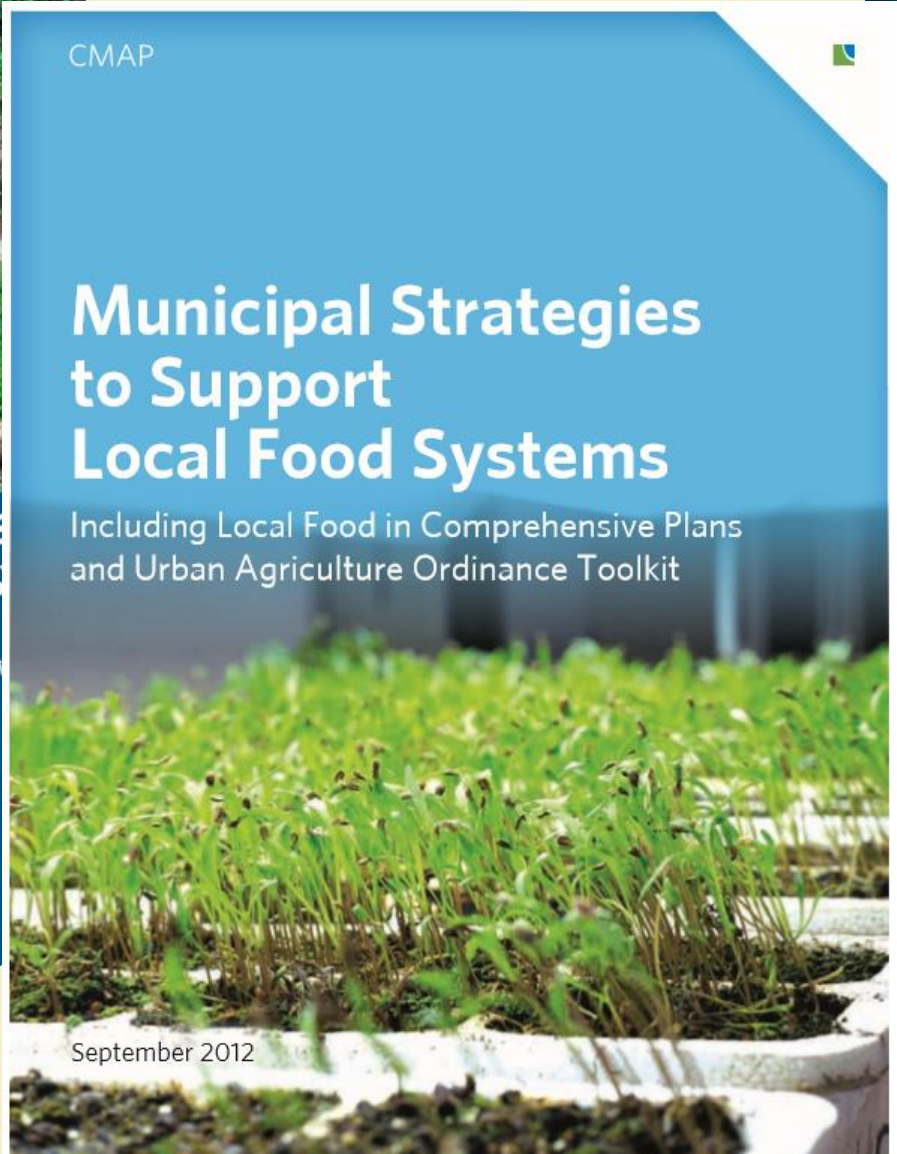
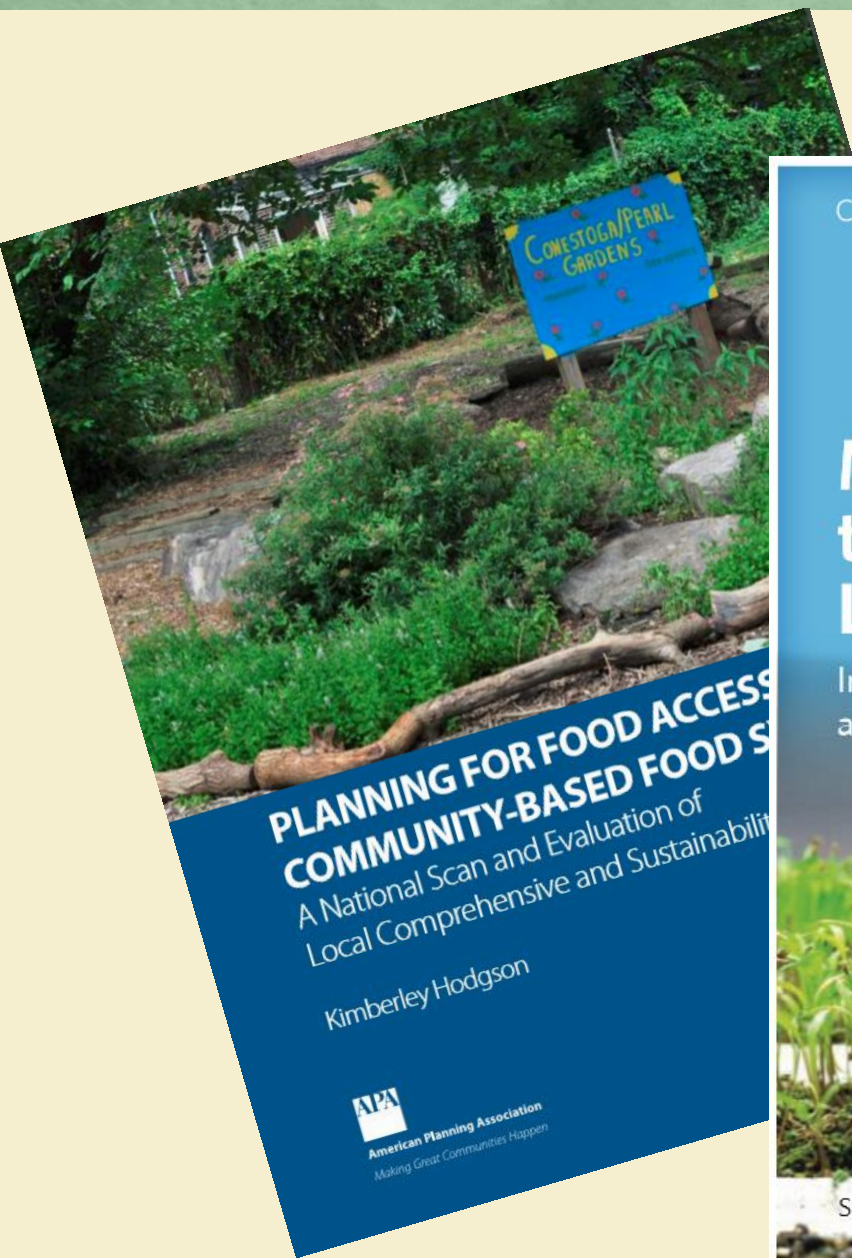
CHICAGO METROPOLITAN  
PLANNING ASSOCIATION

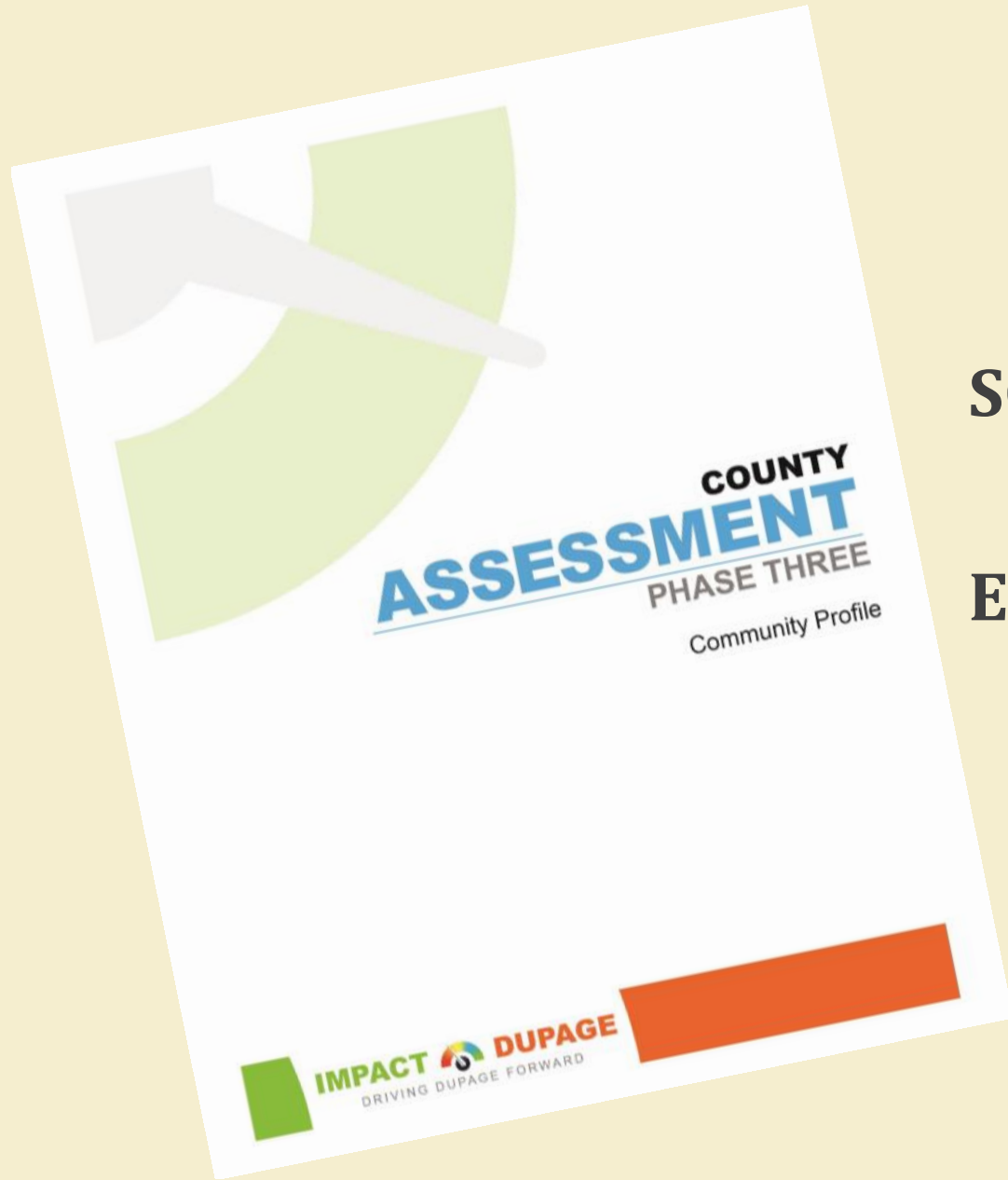
# GOOD FOOD SYSTEM

***Accessible:*** All families and individuals have equitable access to healthy, affordable, and safe food

***Sustainable:*** Enhances the community's environmental, economic, and social well-being

***Health-promoting:*** Improves healthy eating habits and lowers the risk of diet related diseases such as diabetes and obesity





**SOCIAL DETERMINANTS OF HEALTH**  
*FOOD SECURITY*

**ENVIRONMENTAL HEALTH**  
*LOCAL FOOD SYSTEM*

**EDUCATE**  
consumers on diet  
and disease

**ENCOURAGE**  
local food consumption

**BOOST**  
sustainability

**SUPPORT**  
local farmers



**IMPROVE**  
access to  
nutritious foods

**INTEGRATE**  
affordable local foods

**REDUCE**  
waste

**BUILD**  
local economy

# CONSUMPTION

<b>INDICATOR</b>	<b>DUPAGE</b>	<b>SOURCE</b>
<b>Adults eating fewer than 5 fruits/vegetables each day</b>	83%	BRFS, 2013
<b>Nutrition Education Sites - % of NIFB Member Agencies</b>	36%	Feeding America, 2014
<b>Children and Adolescents who are Obese</b>	14.80%	DCHD, 2016-2017
<b>DuPage WIC obesity rates for 2-4 year olds</b>	15.10%	DCHD, 2016

# DISTRIBUTION

INDICATOR	DUPAGE	ILLINOIS	U.S.	SOURCE
People with low access to a grocery store	22.6%	19.36%	22.43%	USDA, 2015
People 65+ with low access to a grocery store	2.60%			USDA, 2015
Low income and low access to food	18.93%	14.68%	18.94%	USDA, 2015
SNAP authorized retailers - rate per 10,000 pop.	5.1	7.19	8.25	USDA, 2017
WIC authorized retailers - rate per 100,000 pop.	15.7	18.40	15.60	USDA, 2011
Emergency Food Pantries (NIFB Members Agencies)	50	*	*	NIFB, 2017
Northern Illinois Food Bank - Direct Connect Retail Partners	100+	*	*	NIFB, 2017
Northern Illinois Food Bank - lbs of food distributed	14,430,000 lbs	*	*	NIFB, 2017
School-based Food pantries	3	*	*	NIFB, 2018

# PRODUCTION & PROCESSING

## INDICATOR

**Farmer's Market Density - rate per 1,000 pop.**

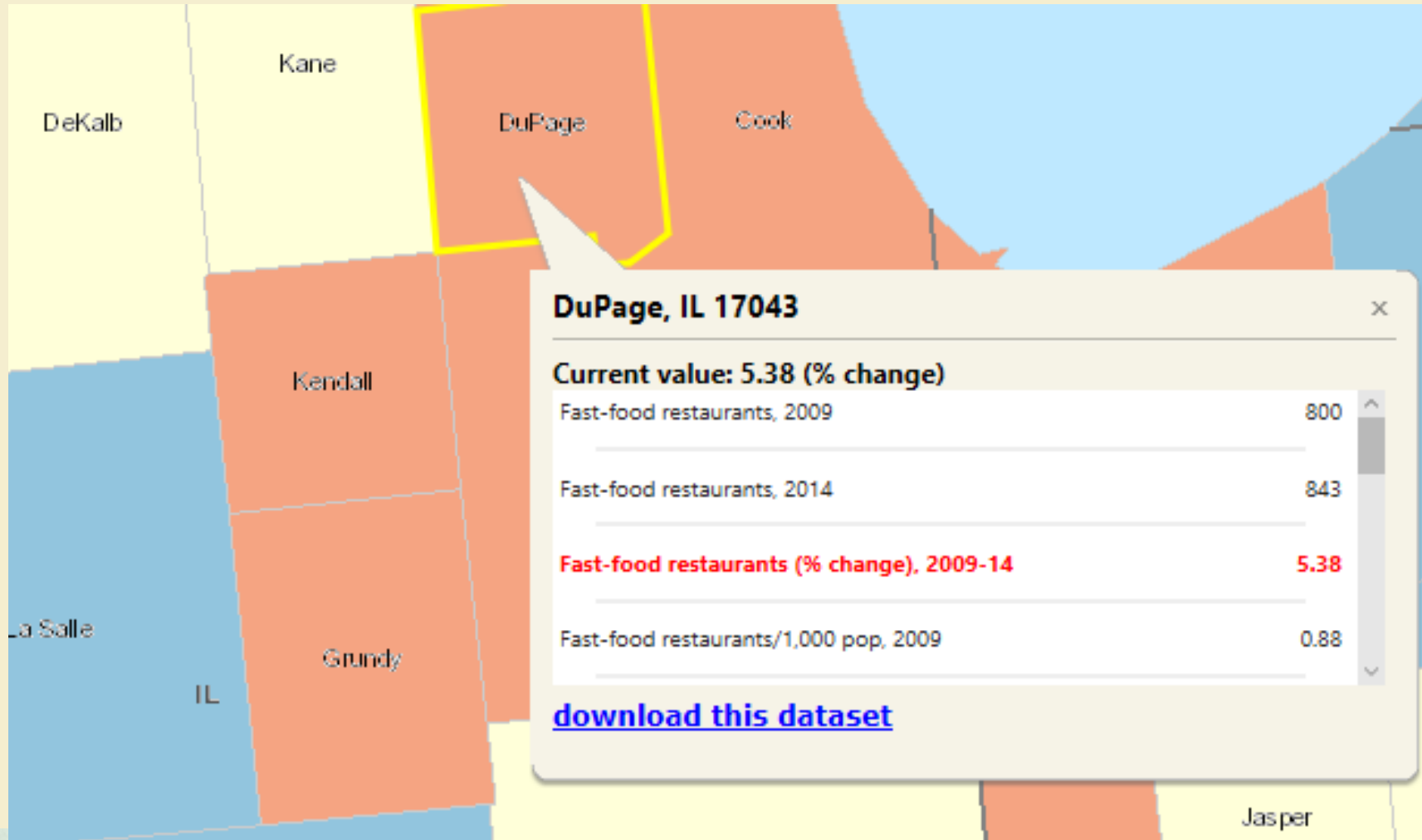
**Community Gardens/CSA's/food co-ops**

**Inventory of community agricultural land zoning**

**Use of locally grown food products in school food service programs**

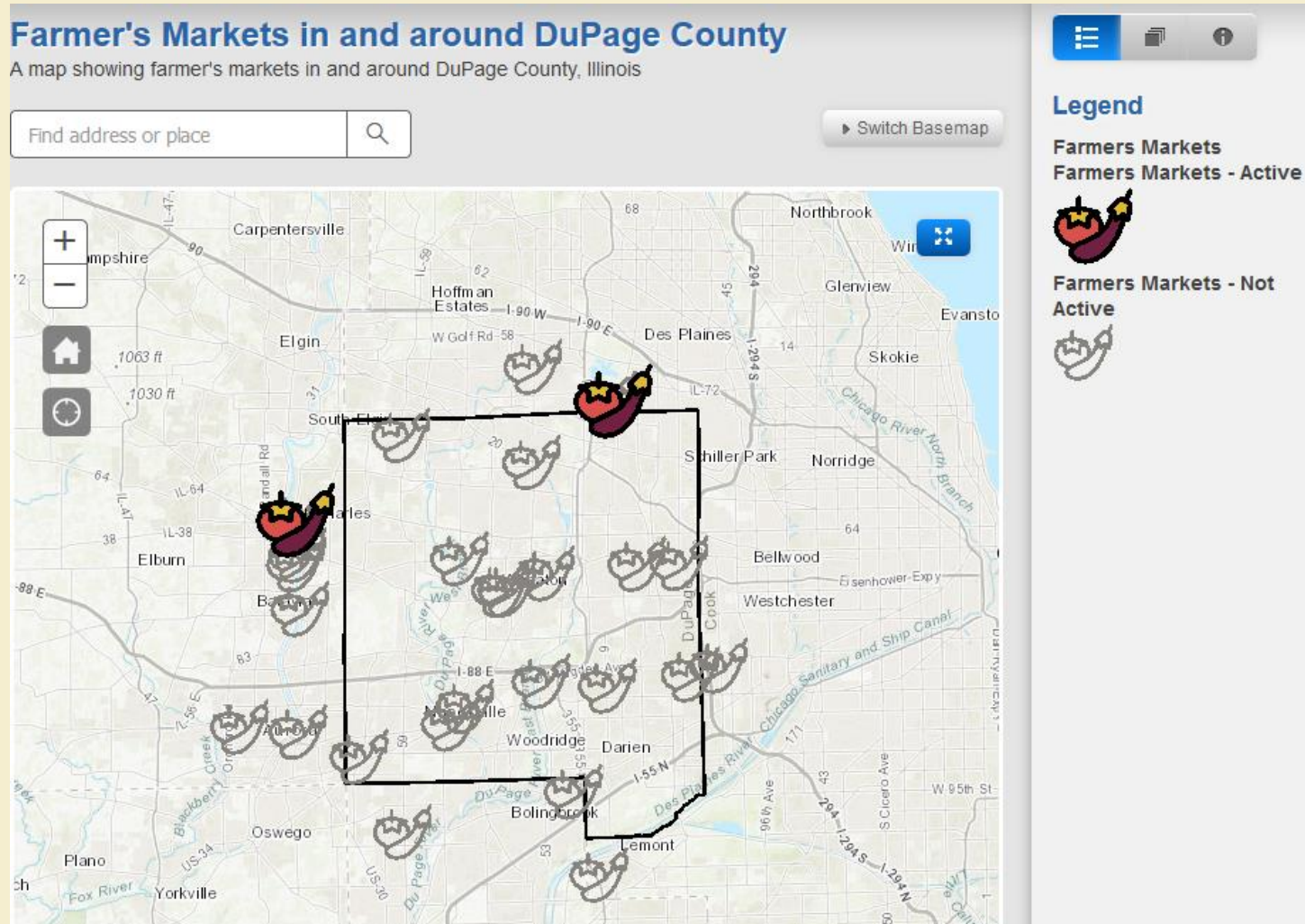
**Northern Illinois Food Bank - Direct Connect Retail Partners**

# FAST FOOD DENSITY DUPAGE COUNTY 2009-2014



Source: USDA Food Atlas, 2009 - 2014

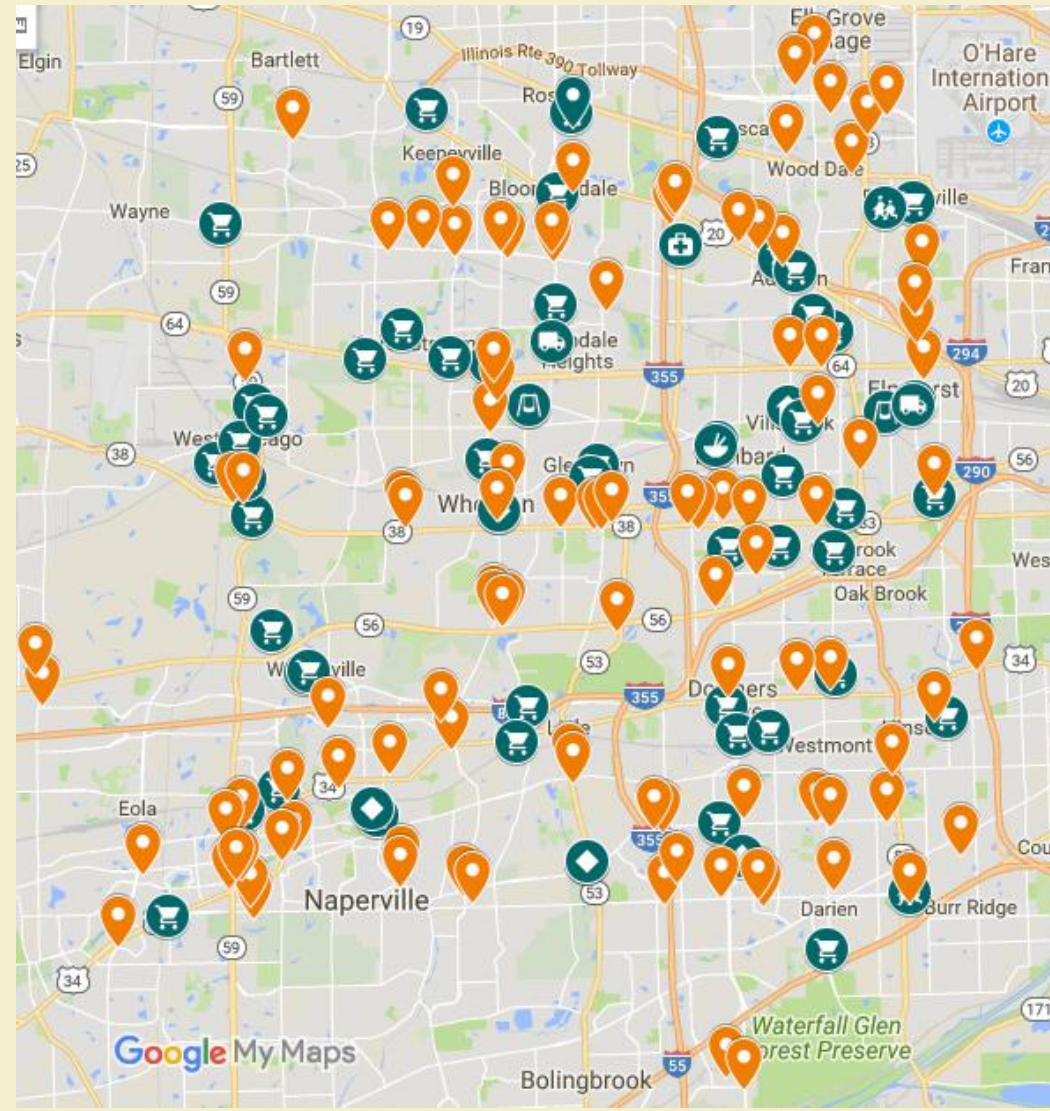
# DuPage Farmer's Markets: Active & Non-Active



Source: DuPage County, GIS – last updated May, 2016

# NIFB RESOURCES

- Direct Connect  
*Weekly Pick Ups*
- Fresh Rescue
- Milk2MyPlate



Source, NIFB 2017



#### LOCAL FOOD

Connecting with local farms and healthy food resources in order to provide healthy food to pantries, develop pantry community gardens, and promote supporting local food sources, and giving locally.



#### ORGANIZING AROUND FOOD

Promoting asset-based community development with food through co-op start ups, SNAP/EBT at pantries, community organized efforts and training, and creating connections between job development and food systems.



Nutritional Options for Wellness Program

#### HEALTH AND NUTRITION

Offering healing through food options and training, Healthy Food Policy Training and nutrition curriculum. Healthy insurance rebate program for CSA/farm produce.



#### GOOD FOOD

Helping charitable food organizations transition away from old models of emergency food into the vision of a Good Food System, while aligning with the Good Food Charter, providing training, and changing the measurement of local charitable food from output to outcome/impact.



# GROUP DISCUSSION